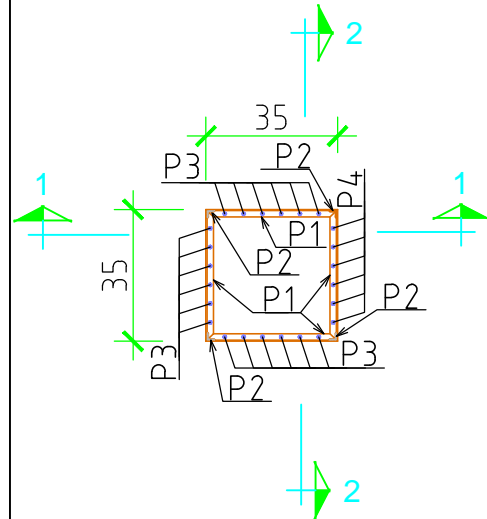


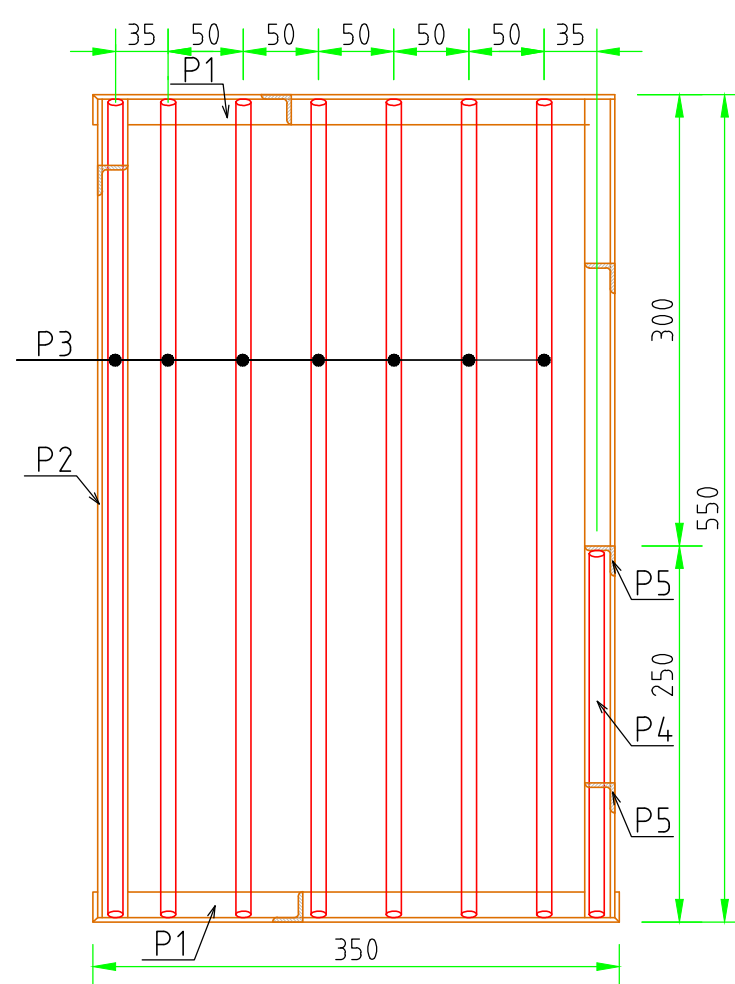
VEDERE IN PLAN

SCARA 1:20



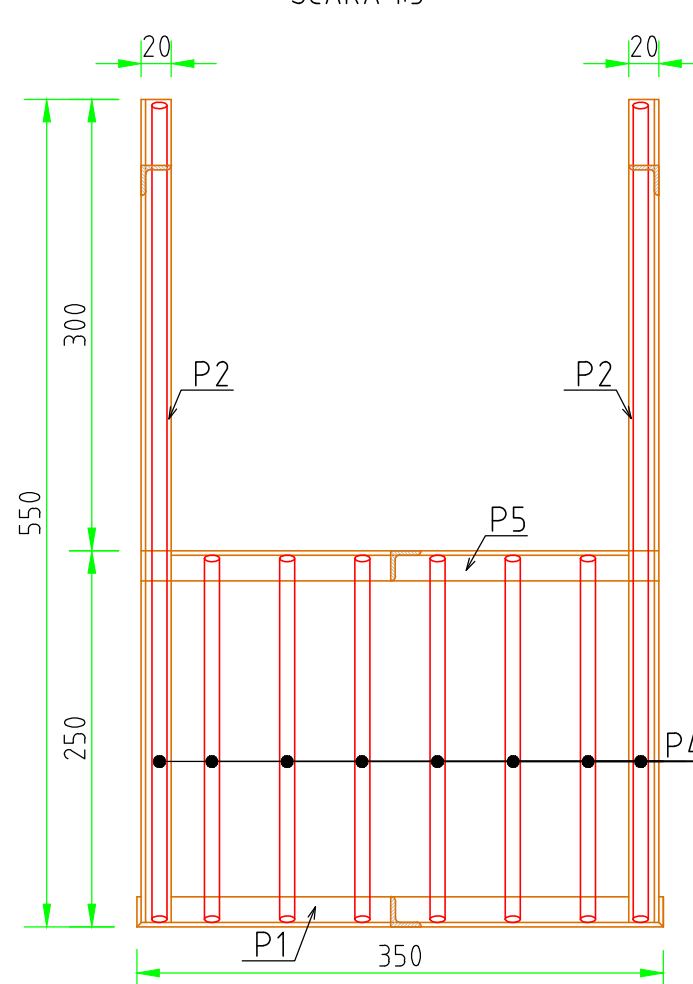
SECTIUNEA 1-1

SCARA 1:5

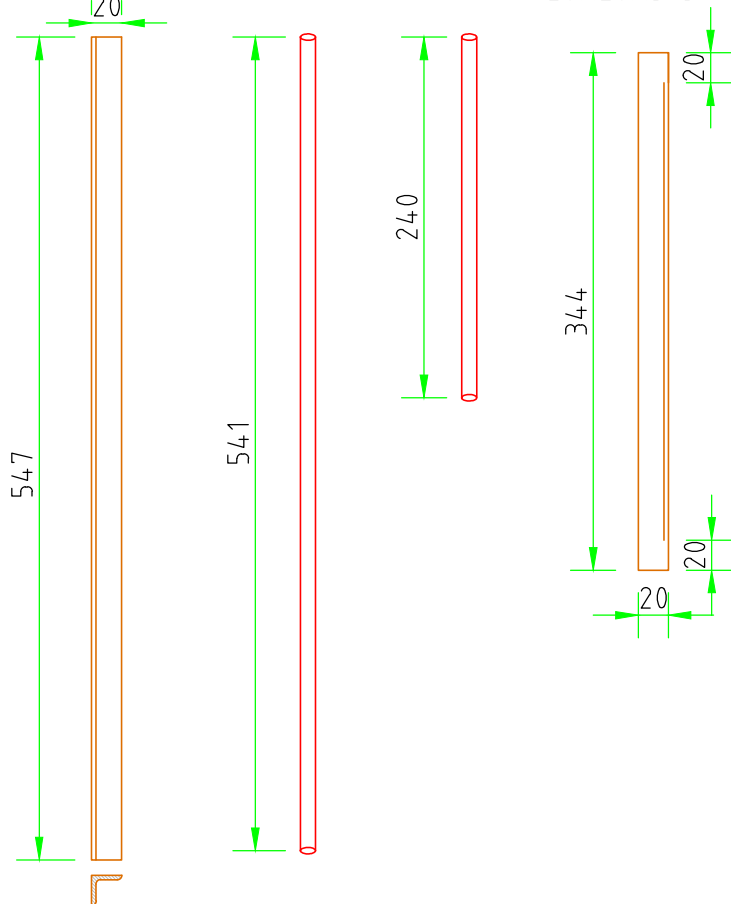


SECTIUNEA 2-2

SCARA 1:5



P2 -4buc 20X20X3-547
P3 -18buc Ø10-541
P4 -6buc Ø10-240
P5 -1buc 20X20X3-344



Extras de laminate

POZ	DENUMIRE	SECT.	MATERIAL	LUNG	Kg/ml	Kg/buc	BUC	GREUTATE Kg
1	Comier	20x20x3	X5CrNi-18-10	0.35	0.88	0.308	7	2.16
2	Comier	20x20x3	X5CrNi-18-10	0.547	0.88	0.481	4	1.93
3	Bara rotunda	Ø10	X5CrNi-18-10	0.541	0.617	0.334	18	6.01
4	Bara rotunda	Ø10	X5CrNi-18-10	0.240	0.393	0.094	6	0.57
5	Comier	20x20x3	X5CrNi-18-10	0.344	1.94	0.667	1	0.67

TOTAL= 11.32
ELECTROZI 3%= 0.34
TOTAL GENERAL LAMINATE(Kg)/buc 12

Rev	Nume	Ver	Aprb	Data	Descriere

Autoritatea contractanta: S.C.AQUACARAS S.A. CARAS SEVERIN



Adresa: P-la Republicii, nr. 7, Resita
Jud. Caras Severin
Tel.: +40 255 212 458
Fax.: +40 255 214 421
E-mail:office@aquacaras.ro

Proiectant: **Consortiu S.C Eptisa Romania S.R.L. si Eptisa Servicios de Ingenieria S.L.**
Sos. Dudesti-Pantelimon nr. 42, RAMS center, et. 5, corp A, sector 3, Bucuresti
Tel: +40 21 301 14 70
Fax: +40 21 301 14 80
www.eptisa.com



Proiect: **MODERNIZAREA INFRASTRUCTURII DE APA SI APA UZATA IN JUDETUL CARAS SEVERIN - AGLOMERAREA RESITA**

Plansa:

Detaliu gratar tip cos

Desenat: Ing. B. Paraschiv	Data: Feb. 2013
Verificat: Ing. M. Serbanoiu	Data: Feb. 2013
Aprobat: Ing. D. Spiridon	Data: Feb. 2013

Plansa nr. CS-RE-PT/DA-C-R-02	Revizia 0
-------------------------------	-----------

Scara plansa: 1 :20